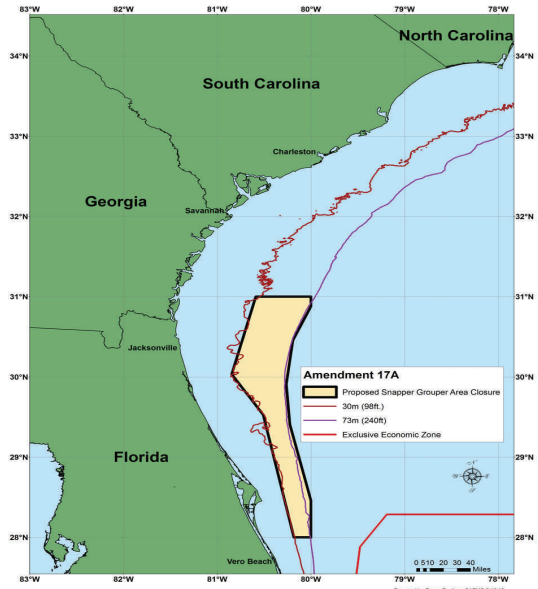


BOARD OF TRUSTEES

- Mr. Robert Jones, FL**
President
Southeastern Fisheries Assoc., Inc.
- Mr. Mike Voisin, LA**
Vice President
Louisiana Seafood Processors Council
- Mr. Rutledge Leland, SC**
Secretary/Treasurer
South Carolina-At-Large
- Mr. Jack Amason, GA**
Georgia-At-Large
- Ms. Wilma Anderson, TX**
Texas Shrimp Association
- Mr. Joey Daniels, VA**
Virginia -At-Large
- Mr. Byron Despaux, LA**
Louisiana Shrimp Association
- Mr. Craig Dopson, SC**
South Carolina Shrimp Assoc.
- Mr. Philip Horn, MS**
Mississippi-At-Large
- Mr. Chris Nelson, AL**
Alabama-At-Large
- Captain James Ruhle, NC**
North Carolina-At-Large
- Mr. Jerry Sansom, FL**
Organized Fishermen of Florida
- Ms. Kay Williams, MS**
Mississippi-At-Large
- Captain John Woods, GA**
Georgia Shrimp Association, Inc.

Drastic measures impacting Red Snapper and Grouper

While fishermen in the Gulf of Mexico are currently participating in Red Snapper and Grouper Individual Transferable Quota (ITQ) Programs, both commercial and recreational fishermen in the South Atlantic are looking at a complete bottom fishing closure for an area stretching from just north of Vero Beach, Florida to southern Georgia. This proposed fishery closure is in response to the results of the SEDAR 15 stock assessment, which shows that red snapper are overfished and that overfishing of the stock is occurring.



At their March 2009 meeting in Jekyll Island, GA, the South

(Red Snapper, Continued on page 2)

Foundation Hosts Fishery Roundtable Discussion

A meeting between marine stakeholders from the Southeast, including commercial fishers, environmental groups, and NOAA Fisheries representatives, to address the urgent need for updated science to manage living marine resources, was held on Saturday, June 12, 2010 at the Hilton Hotel at Disney World in Orlando, FL. Topics discussed included 1) how to improve fisheries science in the Southeast, 2) the role of catch shares as a management tool for fisheries in the Southeast, 3) reauthorized Magnuson-Stevens Act reform, and 4) increasing cooperative funding for fisheries science. Bob Jones, President of the Foundation, noted “This was a starting point in keeping southeastern fisheries viable, while continuing to promote good stewardship of the resource.”

Gulf & South Atlantic News is published by the Gulf and South Atlantic Fisheries Foundation, Inc., the research and conservation partner of the southeastern U.S. commercial fishing industry.

To contact GSAFFI, call:
Ph: (813) 286-8390
Fax: (813) 286-8261
E-mail: gulfsouthfdn@att.net
www.gulfsouthfoundation.org

The meeting consisted of a group panel discussion that included 17 stakeholders, representing fishing organizations, fish houses, environmental organizations and fishery management. A catch shares panel discussion followed the main program. The meeting was well attended and the format allowed interested parties to ask questions of the panel and make comments on the topics covered. The potential for follow-up meetings is being explored. A meeting summary is being prepared and once completed will be available on the Foundation website.



Fishermen Unite for Rally in Washington, DC

Over 3000 fishers and their families from around the country, both commercial and recreational, met by the steps of the Capitol Building in Washington, DC, on February 24th, in hopes of convincing Congress that the reauthorized Magnuson-Stevens Act, as currently written, is slowly ruining domestic fisheries and the communities that rely on them. Billed as the "United We Fish" campaign, fishers arrived by the busload from both coasts. The participants believe overly restrictive management measures are being forced upon fisheries stakeholders, through policies shaped by environmental NGOs blessed with exceptional resources and influence, particularly in Washington, DC.

This was a landmark event for the fishing industry as a whole. Rarely have all sectors, been able to put aside their differences and come together to support a common cause. Fishers realize this single rally will not solve the problems facing the industry, but hope it was a first step towards raising national awareness.

Red Snapper (Continued from page 1)

Atlantic Fishery Management Council (SAFMC) voted 7-6 to request an interim rule be put in place for red snapper. This rule enacted a closure of the fishery for 180 days, effective January 4, 2010 until June 2, 2010. NOAA Fisheries published an extension of this rule, continuing the closure through December 5, 2010.

Unfortunately, according to SEDAR, closing the red snapper fishery will not be a sufficient enough measure to end overfishing. Discard mortality rates are calculated to be 40% for the recreational fishery and 90% for the commercial fishery. Because of this, large swaths of hard bottom, where the bulk of red snapper catches are highest, will be closed to all bottom fishing (Snapper Grouper Amendment 17A).

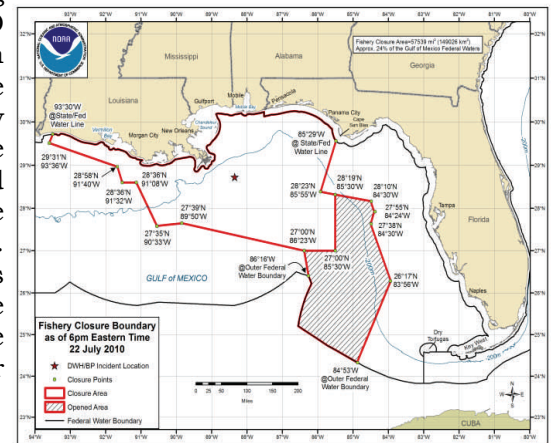
At all of the SAFMC public hearings and quarterly meetings held over the past year, thousands of fishing stakeholders have commented on the proposed regulations, the vast majority expressing their concern and confusion with the bottom fishing closure. Management measures that may be implemented later this year through Amendment 17A include 1) a continuation of the closure of the red snapper fishery; 2) a new area closure off of northeastern Florida and southern Georgia, where fishing for all snapper grouper species in water depths of 98 - 240 feet would be prohibited (with the exception of spearfishing and use of black sea bass pots); 3) a requirement for the use of non-stainless steel circle hooks when fishing for snapper grouper species north of 28 degrees N. latitude; and 4) the development of a fishery-independent monitoring program to help track the rebuilding and recovery of red snapper.

For more information on the red snapper issue, visit www.safmc.net

BP Deepwater Horizon Catastrophe Impacts

Since that fateful day April 20, 2010, when the Deepwater Horizon drilling rig exploded 41 miles off the coast of Louisiana, killing 11 platform workers and injuring 17 more, an estimated 35,000-60,000 barrels of crude oil have flowed into arguably the most important marine ecosystem in North America. The immediate impacts are easy to see: endangered wildlife swimming through oil slicks, commercial fishermen cordoned off from the waters they have fished for generations, tar balls washing up on the beaches of Gulf coast resorts, the negative perception that Gulf seafood is tainted and must be avoided. The long-term impacts are cloudy at best and even marine scientists can only guess at what the lasting damage may be.

NOAA Fisheries Service has instituted an emergency fishing closure for both the commercial and recreational sectors, since the spill date. The size of the closure has ranged from 4.5—36% of Gulf of Mexico waters. Changes to the closure are evaluated daily, with announcements being posted on the SERO website and through dissemination of the Southeast Fishery Bulletin. Changes are posted around noon and go into effect at 6 p.m. the day changes are made. The Foundation continues to disseminate information about the spill as it is received. For updated information, visit www.RestoreTheGulf.gov



CLOSURE AS OF JULY 22, 2010

Gulf & South Atlantic Fisheries Foundation, Inc.

Program Update

“A Continuation of Technology Transfer of New Turtle Excluder Device Modifications and Updated BRD Information to the Southeastern Shrimp Industry”

(NA05NMF4331074, GSAFFI #95)

This project involves the networking of Foundation gear specialists throughout the Southeastern United States to educate the shrimp fishing industry about recent changes to TED and BRD regulations. Gear experts from the Foundation/Sea Grant collaborate with NMFS Harvesting Branch specialists to assist in the dissemination of necessary educational information. Efforts are being conducted through formal workshops and one-on-one dockside meetings from the Virginia-North Carolina border to Texas.

From industry meetings sponsored by the Foundation, it is apparent that many fishermen are concerned about the speed in which BRD regulations are being considered especially when reliable estimates of fishing effort are not certain. With the publication of the final protocols in the Federal Register, the Foundation's Regional Coordinators have stepped up their efforts to hold workshops and dockside outreach. The final rule for decertification of the Gulf Fisheye was published on May 18, 2009 making the Fisheye no longer a legal BRD unless placed in a location no further forward than nine (9) feet from the cod end tie off rings. Outreach efforts are continuing.

“Reduction Rates, Species Composition, and Effort: Assessing Bycatch within the Gulf of Mexico Shrimp Trawl Fishery”

(NA07NMF4330125, GSAFFI #101)

In conjunction with this project, a meeting was convened at the NMFS Laboratory in Galveston, TX on May 20-22, 2008. Individuals knowledgeable about BRDs met to assess the performance of BRDs within the Gulf of Mexico based on the new certification criteria set forth by the Gulf of Mexico Fishery Management Council, which required a 30% reduction in overall finfish bycatch in the shrimp fishery. The analyses assessed total finfish reduction rates achieved by currently certified and experimental BRDs within the Gulf of Mexico, species specific

reduction rates, and spatiotemporal finfish reduction rates (or any combination thereof).

Dr. Benny Gallaway and staff of LGL Ecological Research Associates, Inc., performed the analyses and presented results to the workshop panel. In addition, the research assessed changes in shrimp trawl bycatch over time; available databases and relevant literature was analyzed and reviewed. To provide a qualitative assessment of the impact of shrimp fishing on finfish population, a limited number of spatial analyses were conducted. Finally, the results of this project have been disseminated to the commercial fishing industry and fisheries managers at a Foundation coordinated Industry/NMFS BRD workshop held in November 2008. The Final Report has been finalized and is available through the Foundation. Dr. Gallaway presented the findings at the 2010 MARFIN meeting in St. Petersburg, FL.

“A Program to Enhance Industry Evaluations of Complex Bycatch Reduction Devices within the Gulf of Mexico Shrimp Trawl Fishery”

(NA07NMF4540077, GSAFFI #102)

Through this project, a variety of technically complex BRDs have, and are being, distributed to “high liners” within the shrimp trawl fishery to allow for evaluations of alternative BRD designs. The devices that were distributed include the Modified Jones-Davis, Composite Panel BRD, Extended Funnel and other devices that show potential for reducing finfish from trawl nets.

To allow for a comparison of catch rates between devices, the outermost nets have a complex BRD (experimental net) and a legally positioned Fisheye BRD (control net) installed. The participating captain is asked to photograph the cod end of the nets at the end of each tow. Although this data is a qualitative estimate of BRD performance, it serves as a quick comparison between catches. Once the captain and crew of the vessel have completed preliminary evaluation trials, they will be asked to collect more detailed data on the catch rates of shrimp (measured in weight) and total bycatch

(Continued on page 4)

(Continued from page 3)

(measured in bushel baskets).

In addition to distributing and receiving feedback on BRD performance from the industry, BRD construction training is provided to net makers throughout the southeast. This is an important step in streamlining technology transfer.

To date, the Gulf Coordinator has distributed 600-700 Foundation and NMFS provided BRDs throughout the Gulf Region. Additional vessels continue to participate and fishermen continue to report on BRD performance. Currently, proof of concept work is being conducted by industry on versions of the Modified Jones-Davis BRD, principally by removing the spooker or changing spooker size.

At the conclusion of the project, the final report will summarize the comments of the participating fishermen (e.g., would participating fishermen utilize the more complex gears, or are there any changes that could be used to increase performance) and elementary analyses of the data collected on shrimp and bycatch catch rates.

“Development of Social Indicators for Fishing Communities of the Southeast: Measures of dependence, vulnerability, resilience and gentrification”

(NA08NMF4270412, GSAFFI #103)

The Foundation received funding through the Saltonstall-Kennedy grant competition to create social indicators for fishing communities. These indicators will serve as proxies for potential threats to the commercial and recreational fishing communities in the South Atlantic and Gulf of Mexico by looking at the main aspects of dependence, vulnerability, resilience and gentrification.

Two workshops were convened to develop a protocol for the construction of social indicators applicable to coastal fishing communities and their evaluation through field research in a few select communities. The social indicator indices were developed to investigate dependence, vulnerability, resilience, and gentrification of coastal communities. Social scientists conducted semi-rapid assessments of several communities in the Galveston Bay and San Antonio Bay areas of Texas. These consisted of interviews with fishermen, photographs of infrastructure and some basic GPS mapping of the area. The fieldwork and index data analysis has been completed and the Final Report will be available in July.

“Industry/NMFS Bycatch Reduction Device Workshop”

(NA08NMF4540398, GSAFFI #104)

The Foundation originally received funding to hold this workshop in July 2008, however scheduling was delayed until several new regulations were published. Establishing newly certified Bycatch Reduction Devices (BRDs) and de-certifying the Gulf Fisheye BRD and Expanded Mesh were two important changes to the regulations that were discussed at the workshop. The workshop was convened in November, 2008 to cooperatively discuss the current state of knowledge regarding BRD research, technology, and regulations and provide critical guidance to the commercial shrimp industry at a time when important changes to gear regulations could create significant disruption with regard to technology transfer. Information provided at the workshop has assisted the commercial shrimp industry with the transition to development and utilization of new BRD designs and compliance with new regulations. The final deliverable is a workshop report, which includes an overview of the workshop discussions, research priorities, presentations and handouts, and is available from the Foundation.

“Development and Assessment of Bycatch Reduction Devices within the Southeastern Shrimp Trawl Fishery”

(NA08NMF4330406, GSAFFI #105)

This project involves field testing of up to three new or promising bycatch reduction devices (BRDs) for certification following the NMFS BRD Certification Testing Protocol for the Gulf of Mexico and South Atlantic. Devices are being field tested aboard commercial fishing vessels with onboard observers collecting data outlined within the Testing Protocols. Collected data will be analyzed to identify the reduction in fishing mortality achieved by BRDs.

To increase industry's involvement in the process of BRD research and development, the Foundation has solicited industry designed BRDs, contributed funds for industry BRD development, and reimbursed the travel of industry members to Panama City to observe underwater hydrodynamic performance tests of fishing gear conducted by NMFS gear specialists. The Double-Fisheye array, the Modified Composite and the Nested Cylinder are being tested by the industry.

Continued on Page 5

(Program Update Continued from page 4)

“Comparative Ethnography in the Development of Impact Assessment Methodologies: Profiling Two South Carolina Fishing Communities”

(NA08NMF4330407, GSAFFI #106/111)

The project is being conducted over 24 months, with a year of ethnographic fieldwork, testing and refinement of methodologies, and analysis, followed by a year of continued data analysis and feedback from communities and experts on methodologies. Descriptions of coastal communities and the relationships with the fishing industry will be determined. These include commercial and recreational fishing-related activities and businesses, historical information on fishing related activities, community structure and social ties based on fishing, and changes in the community due to federal regulations on the fisheries. During the course of this research, working interactively with community residents and expert observers of fishing communities, the project will test and refine impact assessment methodologies to determine those most effective in assessing economic and social impacts of fishing regulations.

The first year of fieldwork has been completed. Oral histories were taken from fishers in the coastal communities of Shem Creek and Little River, SC. Cooperation from the industry has been well received and the second year of work began in August 2009. Contractors have conducted two presentation workshops in Charleston, SC. On-going objectives include setting up workshops for fishers and management personnel to elicit feedback on the effectiveness of Year I research.

“A Continuation of Catch Characterization and Discards within the Snapper Grouper Vertical Hook-and-Line Fishery of the South Atlantic United States”

(NA08NMF4540399, GSAFFI #107)

To enhance the universe of data that are available to stock assessment scientists, the Foundation is continuing the fishery observer program within the snapper grouper vertical hook-and-line (bandit reel) fishery of the South Atlantic United States. This project has built on the work completed through the Foundation’s previous catch characterization project. Through the cooperation of Contractors (both Industry and Foundation), participation of the commercial fishing industry has been solicited to



voluntarily assist in the performance of this project.

An observer has been placed onboard cooperating vessels to collect a variety of data quantifying the effort, gear, catch, and discards within the fishery. The intent of this project is not to form a standalone dataset, but to augment currently available datasets. As such, most data analyses will be descriptive (proportional catch, discards, etc.), although some statistical tests will be conducted. As in the previous project (NA06NMF4540059, GSAFFI #99), the Foundation requested and received an Exempted Fishing Permit and appropriate state and Federal permits.

The full slate of sea days have been completed and data analysis is being completed. Preliminary results from this project were presented at the June 2010 South Atlantic Fishery Management Council meeting in Orlando, FL. The Final Report will be available in September.

“Social Impacts of the Allocation / Reallocation of Marine Fisheries Resources on Communities in the Gulf of Mexico and South Atlantic: Development of an Empirical Predictive Model”

(NA09NMF4330149, GSAFFI #108)

The purpose of this research is to develop a quantitative model for predicting the social impacts of allocation or reallocation schemes on fishing communities. This model will specifically predict changes in social well being as shifts in Total Allowable Catch (TAC) and how commercial and recreational allocations are made. In addition, the model will be carefully examined and validated by

(Continued on page 6)

(Program Update continued from page 5)

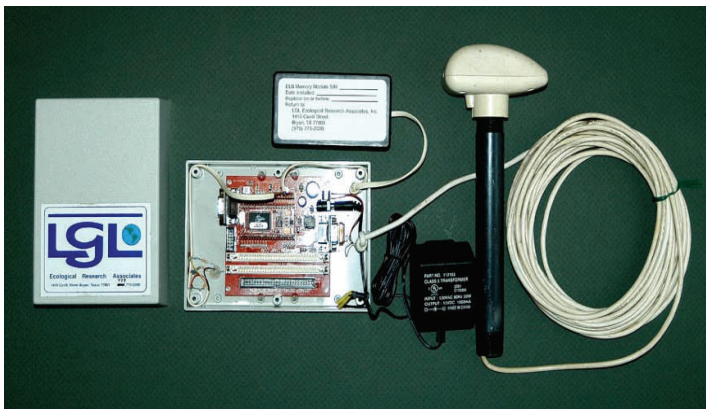
ground-truthing and triangulation techniques that will ensure the model corresponds to actual feedback from the fishing industry. This information could be used in the future by councils to determine how regulations are affecting the health of fishing communities.

“Continuation of a Project to Augment the Data Collection of an Electronic Logbook System Used within the Gulf of Mexico Shrimp Fishery”

(NA09NMF4540135, GSAFFI #109)

The dynamics of the Gulf of Mexico red snapper fishery are complex and various user groups are thought to impact the stock. As such, disagreement has existed regarding the mortality, age composition, and monthly distribution of juvenile trawl-caught red snapper. Furthermore, recent assessments of blacknose shark suggest significant mortality from bycatch in the Gulf shrimp fishery. To alleviate this confusion, the Foundation is receiving funds through the Cooperative Research Program for the continuation of a program to augment a previously funded ELB project with fishery observers.

As before, fishery observers are placed aboard shrimp trawl vessels that have been randomly selected and have an ELB installed. Observers collect data on total penaeid shrimp, red snapper and small coastal shark catch. Data collected during this project will be used to compute mortality estimates for all Foundation collected red snapper bycatch data (both past and present). Results will be used to validate ELB landings estimates by region, quantify red snapper and small coastal shark bycatch rates, and to assist fisheries managers in the assessment of both stocks. Two new observers have been trained and data collection trips began in February.



“Assessment of the Impacts of the Oculina Bank Marine Protected Area (MPA) and In-Depth Ethnographic Profile of the Fort Pierce, Florida Fishing Community”

(NA09NMF4270086, GSAFFI #110)

This study, which has been funded through Saltonstall-Kennedy, will evaluate the impacts of the MPA on a fishing community, in particular the recreational, charter and commercial fishermen of Ft. Pierce, Florida. This is being accomplished through in-depth interviews conducted by trained research assistants from the community who represent the three sectors of the fishing community. Further, the project will provide an in-depth description of the fishing community of Ft. Pierce through the ethnographic fieldwork, oral histories, and collection of historical data with regard to the use of the Oculina Bank. A social network analysis will be accomplished to determine community networks and utilization of the Oculina Bank. This research will affect fisheries policy, management and research that are sensitive to social and economic consequences, as mandated in the Magnuson-Stevens Fishery Conservation and Management Act.

Foundation Supported Research Projects



“Advancing Programs to Distinguish and Protect the Values and Reputation of Traditional Domestic Fisheries in the Gulf and South Atlantic Region”

A proposal from the University of Florida (Dr. Steve Otwell) was accepted to develop and implement strategies that protect the value and reputation of grouper. The objectives of the proposal were to 1) develop a project steering committee composed of regional commercial interests; 2) conduct a survey on opinions regarding support for traditional domestic fishery products; 3) conduct a series of open forums with fishermen, wholesalers and retailers to explain the prevailing situations and provide for discussion; and 4) initiate programs based on responses from survey and open forums.

The survey and series of forums have been completed. The survey showed interesting data on seafood awareness and other issues related to the seafood industry. Coupled with productive dialogue in the forums, the information gathered during this project will help focus future research. The final report/analysis is in preparation and the expected results should provide guidance to assist domestic commercial seafood interests in addressing problems in species identification and niche marketing from the dock to the consumer.

“Working Waterfronts in Florida: Stan Mayfield Working Waterfronts Program”

The Foundation is sponsoring research that tracks the Stan Mayfield Working Waterfronts Program and identifies and reviews working waterfront programs in other parts of the United States. The intent is to develop information that can be applied to working waterfronts in all coastal areas in the South Atlantic – Gulf of Mexico regions to develop recommendations and/or models for creating similar programs in other states within the Foundation mission area. The study will also review other Florida land acquisition and development programs that currently exclude or limit commercial uses e.g. the Florida Recreation Development Assistance Program for opportunities for funding for capital improvements. The report is expected to be completed soon.



“Independent Review of a Gag Grouper Allocation Manuscript”

Recently the CCA presented an economic report advocating a 100% allocation of the gag and red grouper total allowable catch to the recreational fishing industry in the Gulf of Mexico. The Foundation supplied funding to three credentialed economists, Dr. John Sutinen, Dr. Kenneth McConnell, and Dr. Robert Johnston, to perform a confidential, unbiased review of the manuscript. The three blind reviews were submitted to the South Atlantic and Gulf of Mexico Fishery Management Councils as an opposing position to the manuscript. The reviews are available upon request from the Foundation.

“Plotting Landing Data and Regulatory Amendments for Gulf and S. Atlantic Commercial Fisheries”

The Foundation sponsored work that assembled data on both South Atlantic and Gulf of Mexico fisheries to examine the possible effects of regulation upon several different fisheries. This was accomplished by comparing landings, value and permits data by species over time with dates of regulatory actions. The timeframe, for which the comparison was based, included all years of data within the online database for each species. The Final Report is available from the Foundation.

(Foundation Supported Research continued from page 8)

“Grouper Forensics for Seafood Quality Control” — University of South Florida

With the proliferation of cheaper, imported seafood, fraud in form of species substitution has become a more common problem affecting the seafood industry. The overall goal of this project is to develop technology to rapidly confirm the identity of fish tissue in the field for seafood quality control. The starting point in this case is to develop such technology for all the types of grouper such that they can be differentiated from less costly substitutes. The specific objectives are: 1) To complete grouper-specific NASBA assay development and validation (simpler DNA test); and 2) To complete development of a handheld sensor including integration of the grouper-specific NASBA assay. The contractors were awaiting the funding instrument from Sea Grant before beginning the project. The Foundation will be giving monetary support to the University of South Florida to offset portions of salary and travel for this project.

“Consumer Acceptance Survey of Post Harvest Processed Oysters” - Interstate Shellfish Sanitation Conference (ISSC)

In response to recent FDA proposals to mandate post-harvest processing of ALL shellfish intended for raw consumption during the summer months, the ISSC is seeking to identify and select an outside independent organization to perform a consumer acceptance analysis for post harvest processed oysters. An analysis of the economic impact of mandating post harvesting controls for Gulf States during months with significant numbers of *V.v.* illnesses will require an evaluation of the acceptability of post harvest processed oysters in the market place. To adequately conduct the analysis, taste preferences and buying decisions of consumers and buyers for restaurants and retail chains must be evaluated. The survey results will be used to assist in determining the level of acceptance by the typical consumer and the extent to which post harvest processed oysters can integrate into the raw oyster market. The Foundation has provided funds to assist with this project.

Research Proposals Submitted by the Foundation

Foundation staff submitted these research proposals during the FY2010 Federal competitive grant process: (projects recommended for funding are highlighted in blue)

MARFIN

“Continued Development and Assessment of Bycatch Reduction Devices Within the Southeastern Shrimp Trawl Fishery”

“Industry/NMFS Bycatch Reduction Device Workshop”

Cooperative Research Program

“Continuation of the Catch Characterization and Discards within the Snapper Grouper Vertical Hook-and-Line Fishery of the South Atlantic United States”

“Continuation of a Project to Augment the Data Collection of an Electronic Logbook System Used Within the Gulf of Mexico Shrimp Fishery”

“The Role of Shrimp Imports in the Decline of Shrimp Reliant Communities in the Gulf of Mexico”

“Pilot Study to Characterize Fishing Effort of the South Atlantic Penaeid Shrimp Trawl Fishery through the use of Electronic Logbooks”

“Continued Development and Assessment of Bycatch Reduction Devices Within the Southeastern Shrimp Trawl Fishery”

“Industry/NMFS Bycatch Reduction Device Workshop”

Gulf of Mexico Fishery Management Council Update



The Council is developing an amendment to implement annual catch limits (ACL) and accountability measures (AM) for all fisheries currently managed. These ACLs will be used to prevent overfishing and/or rebuild stocks that are overfished. The ACLs can be updated as new stock assessments are completed.

Snapper/Grouper Amendment 30B became effective May 18, 2009 and outlined measures to manage shallow water grouper stocks. The minimum size limit for red grouper was lowered from 20" to 18" in an effort to reduce bycatch and the gutted weight quota was raised to 5.75 mp. Also, the 2 month closure was discontinued, but a 4 month closure in an area called "The Edges" was substituted, but included in a separate amendment.

NOAA Fisheries Service has approved Amendment 29 to the Gulf of Mexico Fishery Management Council's Reef Fish Fishery Management Plan, which addresses new commercial regulations for Gulf of Mexico reef fish. The Final Rule implementing these regulations published in the Federal Register August 31, 2009. The rule established a grouper and tilefish IFQ program for commercial fishermen in the Gulf of Mexico; established design elements of the IFQ program; made changes to the red snapper IFQ program to align that program with the grouper and tilefish IFQ program; allows consolidation of reef fish commercial vessel permits; and established dual classifications for speckled hind and warsaw grouper. Most provisions of the rule were effective January 1, 2010. (www.gulfcouncil.org)

During the stock assessment process for gag and red grouper, there was concern about the impact of red tide on natural mortality. The Council decided to use the models that included a red tide component when conducting the most recent stock assessment updates. For the red grouper fishery, the assessment showed that it is not overfished and overfishing is not occurring. This is not the case for gag grouper, which are shown to be overfished and overfishing is occurring, with a substantial portion of the mortality due to recreational dead discards. The Council is preparing Amendment 32 to rebuild the gag stock. In the meantime, a 71% reduction in gag removals is needed for 2011, and with Amendment 32 not scheduled for implementation until mid-late 2011, the Council requested an interim rule that will reduce the commercial quota for gag from 1.41 million pounds in 2010 to 390,000 pounds in 2011. The rule will also close the recreational harvest of gag for the first half of 2011. The Council intends to allow a limited recreational harvest of gag during the second half of 2011. These measures will help to minimize regulatory discards and reduce overfishing of gag until Amendment 32 can be completed and implemented. (GOMFMC June 2010 Update)

The Ecosystem SSC will investigate the interaction of the recovering red snapper stock with both vermilion snapper and grouper stocks in the eastern Gulf of Mexico. This comes from increasing anecdotal data explaining the difficulties of catching shallow water grouper due to high concentrations of red snapper.

Amendment 31 to the Reef Fish FMP was sent out for public comment, with a March 1, 2010 deadline. Measures in this Amendment will 1) prohibit the use of bottom longline gear in the reef fish fishery east of Cape San Blas, Florida, shoreward of a line approximating the 35-fathom depth contour from June through August; 2) reduce the number of bottom longline vessels operating in the fishery through a longline endorsement provided only to federally-permitted vessels with demonstrated average annual landings of 40,000 pounds of reef fish taken by fish traps or longlines during 1999-2007; and 3) restrict the number of hooks that may be possessed onboard each reef fish bottom longline vessel to 1,000 hooks total, only 750 of which may be fished or rigged for fishing at any given time. (Southeast Fishery Bulletin, FB10-003)

The Council is now considering a regulatory framework action that could result in a recreational season change for greater amberjack. The intent is to avoid in-season quota closures during peak fishing months and maximize social and economic benefits. The Council chose a recreational seasonal closure of June 1 through July 31, as its preferred alternative. Final action was deferred until the August meeting in Pensacola, Florida. (GOMFMC June 2010 Update)

For more information about Gulf Council activities, please visit www.gulfcouncil.org

South Atlantic Fishery Management Council Update



NOAA Fisheries Service published the final rule for Amendment 15B to the Snapper-Grouper FMP for the South Atlantic region on November 16, 2009. This final rule: 1) prohibits the sale of snapper-grouper harvested under the bag limits unless the vessel owner has been issued a Federal Commercial Snapper-Grouper Permit; 2) allocates 95% of the total allowable catch of snowy grouper to the commercial sector and 5% to the recreational sector; 3) allocates 50% of the total allowable catch of red porgy to the commercial sector and 50% to the recreational sector; 4) decreases the snowy grouper quota from 84,000 lbs. whole weight to 82,900 lbs whole weight, and increase the red porgy quota from 127,000 lbs whole weight to 190,050 lbs whole weight; 5) revises the stock status determination criteria for golden tilefish; 6) expands the allowable transfer of a commercial vessel permit under the limited access program and extend the allowable period for renewal of such a permit to one year; 7) requires an owner and operator of a vessel for which a commercial or charter vessel/headboat permit has been issued and that has on-board any hook-and-line gear to comply with sea turtle and smalltooth sawfish release protocols and possess on board specific gear to ensure proper release of such species that are incidentally caught; and 8) implements a bycatch monitoring program, which requires any vessel (commercial or recreational) that fishes for snapper-grouper in the EEZ, if selected by NOAA Fisheries Service, to carry an observer and install an ELB and/or video monitoring system. (Southeast Fishery Bulletin, FB09-062)

Snapper/Grouper Amendment 16 was partially approved (all aspects except the venting tool requirement) on March 25, 2009, was published in the Federal Register on June 29 and went into effect on July 29, 2009. It includes a 4 month (Jan.-Apr.) spawning season closure for shallow water grouper that went into effect January 2010. Also included are reductions in recreational bag limits for grouper and vermilion snapper, closed recreational season of November-March for vermilion snapper and establishment of reduced gag and vermilion quotas.

Effective July 22, 2010, a series of 5 deepwater MPAs were implemented. Fishing for any snapper/grouper species within the protected areas is prohibited, but pelagic trolling is still allowed. Comprehensive Ecosystem-Based Management Amendment 1 encompasses over 23,000 square miles of deepwater coral habitat. This Amendment was worked on for the past ten years and is the first step toward prioritizing ecosystem based fishery management in the Southeast. Allowable Golden Crab Fishing Areas and Deepwater Shrimp Access Areas have been set aside within 2 of the Coral HAPCs to allow these fisheries continue in their historical fishing grounds.

Snapper/Grouper Amendment 17A was approved by the Council and was sent to the Secretary.

The results of the updated stock assessment, SEDAR 24 (SA Red Snapper), will be available for Council review at their December 2010 meeting in New Bern, NC.

The details of Limited Access Programs (LAPPs) are being analyzed by Council staff, primarily for wreckfish, golden crab and golden tilefish, and the final product could be used as a framework for other species.

The commercial fishery for golden tilefish in the South Atlantic federal waters has been closed April 12, 2010, through December 31, 2010. NOAA Fisheries Service has determined the 2010 commercial quota of 295,000 pounds of golden tilefish would be reached by that date.

The commercial fishery for black sea bass in federal waters of the South Atlantic from 35°15.19' N. lat., the latitude of Cape Hatteras Light, NC to Key West, FL reopened effective June 1, 2010, until May 31, 2011 or until the quota of 309,000 lbs is harvested. (Southeast Fishery Bulletin, FB10-044)

The commercial vermilion snapper season reopened on July 1, 2010. (Southeast Fishery Bulletin, FB10-044)

For more information about South Atlantic Council activities, please visit www.safmc.org

PACO'S FISH TACOS IN LETTUCE WRAPS

Recipe courtesy Rachael Ray

Prep Time: 15 min

Cook Time: 10 min

Serves: 4

INGREDIENTS

- 2 pounds grouper fish fillets
- Salt and pepper
- Cooking spray
- 1 lime
- Hot sauce
- Bib lettuce, for wrapping
- 1 jalapeno
- 1 cup cilantro leaves
- 3 sprigs fresh mint
- 3 tablespoons grainy mustard
- 2 tablespoons red wine vinegar
- 1/3 cup extra-virgin olive oil
- 1/2 red onion, finely chopped

DIRECTIONS

Heat grill pan or nonstick skillet over high heat. Spray the pan with cooking spray. Place fish on grill, season with salt and pepper and cook 5 minutes on each side, until opaque.

Arrange lettuce leaves on a platter. Place jalapeno in a food processor with cilantro, mint, mustard and vinegar. Turn processor on and stream in oil. Season sauce with salt and pepper.

Take the fish off grill and place on a serving plate. Break the fish into chunks and squeeze lime juice over fish. Add a few dashes hot sauce to the fish.

Pile fish in lettuce leaves and top with sauce and chopped red onions.



SAFMC / GOMFMC 2010 Appointments

South Atlantic Fishery Management Council

Obligatory seats:

Thomas E. Burgess - North Carolina

Thomas L. Swatzel III - South Carolina - returning

Gulf of Mexico Fishery Management Council

Obligatory seats:

Douglass W. Boyd - Texas

Harolyn K. "Kay" Williams - Mississippi - returning

At-large seat:

Lawrence "Larry" G. Abele - Florida

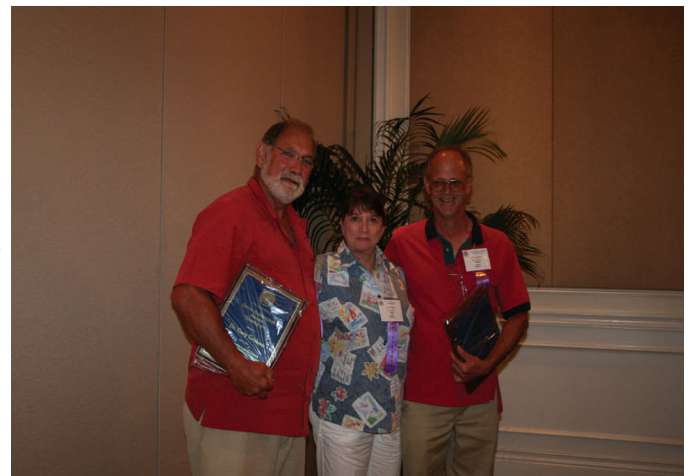
Fisheries Associations Celebrate Decades of Service to Industry

Foundation staff attended the 58th Annual Southeastern Fisheries Association meeting in Orlando, FL, June 10-11, 2010 and gave updates on current Foundation activities during the General Session. The Assembly style format allowed Foundation staff to speak directly with diverse Industry members and was well received by the group as a whole.

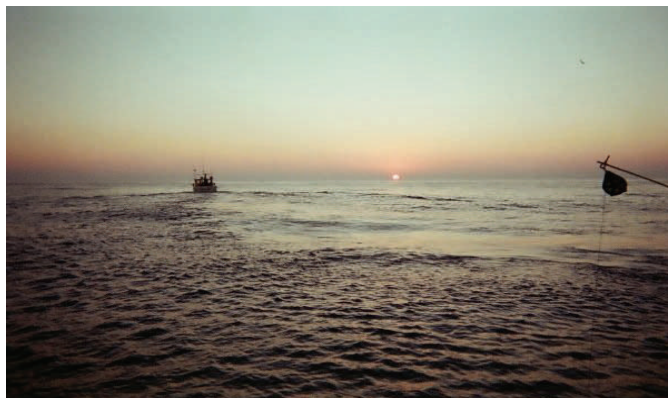
Ms. Jamison attended the 60th Annual Texas Shrimp Association Meeting in Moody Gardens, Texas, June 4-5, 2010.

At the 57th Annual Southeastern Fisheries Association meeting in Key West, FL, Foundation Regional Coordinators, Gary Graham and Lindsey Parker were presented with the David L. Harrington Appreciation Award by Foundation

Executive Director Judy Jamison, a previous recipient. Mr. Graham is a Marine Fisheries Specialist and coordinates the Foundation's Gulf of Mexico projects. Captain Parker has stood at the helm of the R/V Georgia Bulldog for three decades and has done extensive work on TED design in the S. Atlantic.



From left to right, Gary Graham, Foundation ED Judy Jamison and Lindsey Parker



2010

UPCOMING EVENTS

August

- 2-5 **Atlantic States Marine Fisheries Commission Summer Meeting**, Crowne Plaza Old Town Alexandria, 901 N. Fairfax St., Alexandria, Virginia, 703- 683-6000.
- 7 **Great American Seafood Cookoff / Louisiana Foodservice Expo**, New Orleans Convention Center, New Orleans, LA.
- 16-19 **Gulf of Mexico Fishery Management Council**, Crowne Plaza, 200 E. Gregory St., Pensacola, FL 32502, 850-433-3336.
- 17-19 **Mid-Atlantic Fishery Management Council**, Holiday Inn Historic District, Philadelphia, 400 Arch Street, Philadelphia, PA, 215-923-8660.

September

- 13-17 **South Atlantic Fishery Management Council**, Charleston Marriot Hotel, 170 Lockwood Blvd, Charleston, SC, 29403, 1-800-968-3569.

October

- 12-14 **Mid-Atlantic Fishery Management Council**, Congress Hall, 251 Beach Ave., Cape May, NJ, 609-884-8421.
- 18-22 **Gulf States Marine Fisheries Commission 61st Annual Meeting**, Marriott Suites on Sand Key, Clearwater Beach, FL.
- 25-28 **Gulf of Mexico Fishery Management Council**, Embassy Suites, 4919 Constitution Ave., Baton Rouge, LA, 70808, 225-924-6566.

November

- 8-11 **Atlantic States Marine Fisheries Commission 69th Annual Meeting**, Francis Marion Hotel, 387 King St., Charleston, SC, 29403, 843-722-0600.
- 7-12 **Vibrios in the Environment 2010**, Beau Rivage Resort and Casino, 875 Beach Blvd., Biloxi, MS, 39530.
- 14-17 **International Symposium on Energy Use in Fisheries**, Seattle Sheraton Hotel, 1400 6th Ave., Seattle, WA 98101, 206-621-9000.
- 17-20 **13th International Conference on Shellfish Restoration**, DoubleTree Guest Suites, Charleston, SC.

December

- 5-10 **South Atlantic Fishery Management Council**, Sheraton New Bern, 100 Middle St, New Bern, NC, 28562, 1-800-326-3745.